

# Bridge Inspection Report

**A3614**  
**I-40WB/Se51/L237.8**  
**over**  
**Spring Creek**



**Inspection Date:**

**Inspected By:**

**Inspection Type(s):**

## TABLE OF CONTENTS

	PAGE NUMBER
LOCATION MAP	3
NATIONAL BRIDGE INVENTORY	7
ELEMENTS	8
PICTURES	9
SKETCHES	11

Inspector:

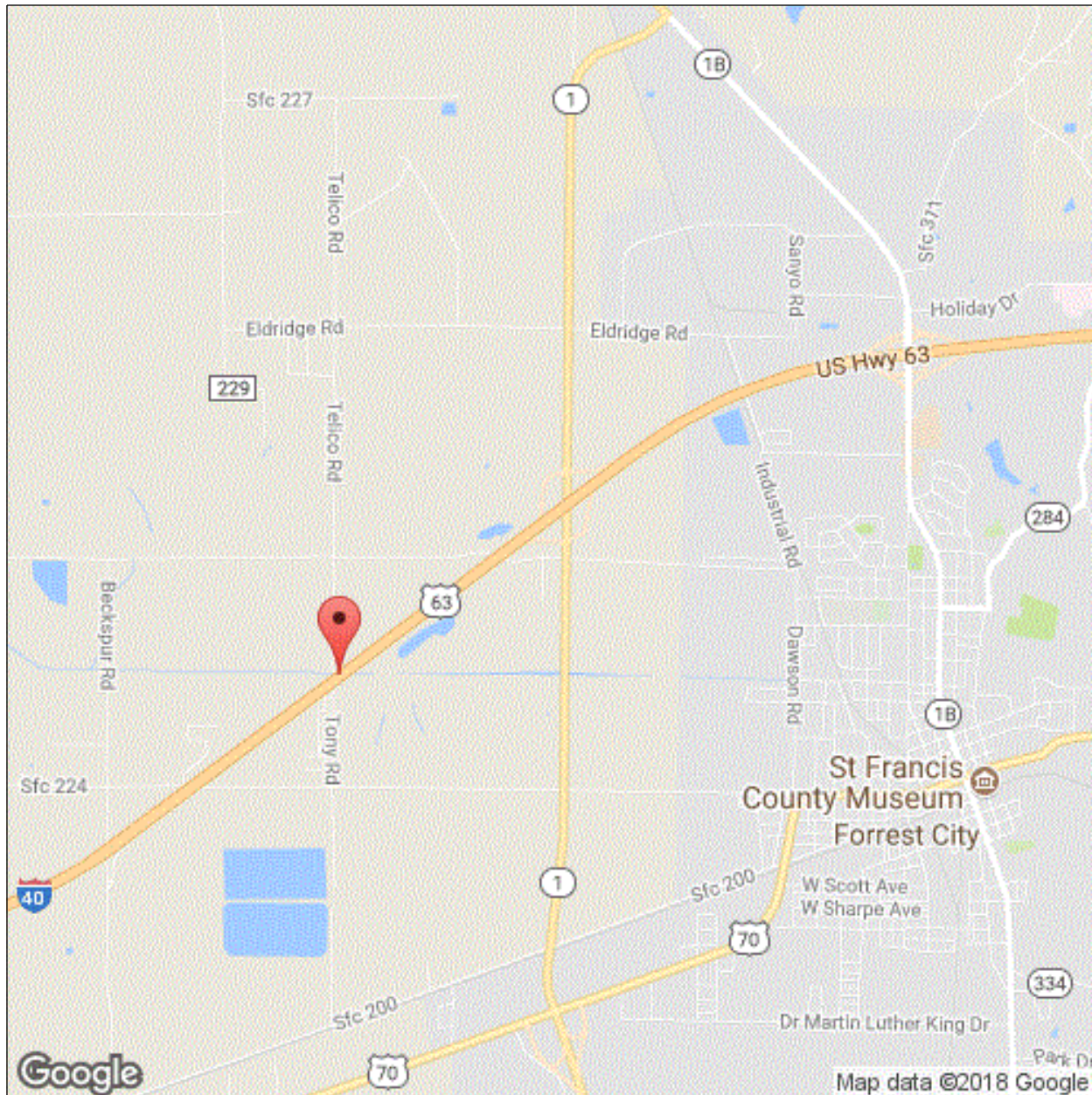
Structure Number: A3614

Inspection Date:

Facility Carried: I-40WB/Se51/L237.8

## Bridge Inspection Report

### Location Map



Latitude: 35.015850

Longitude: -90.834549

Inspector:

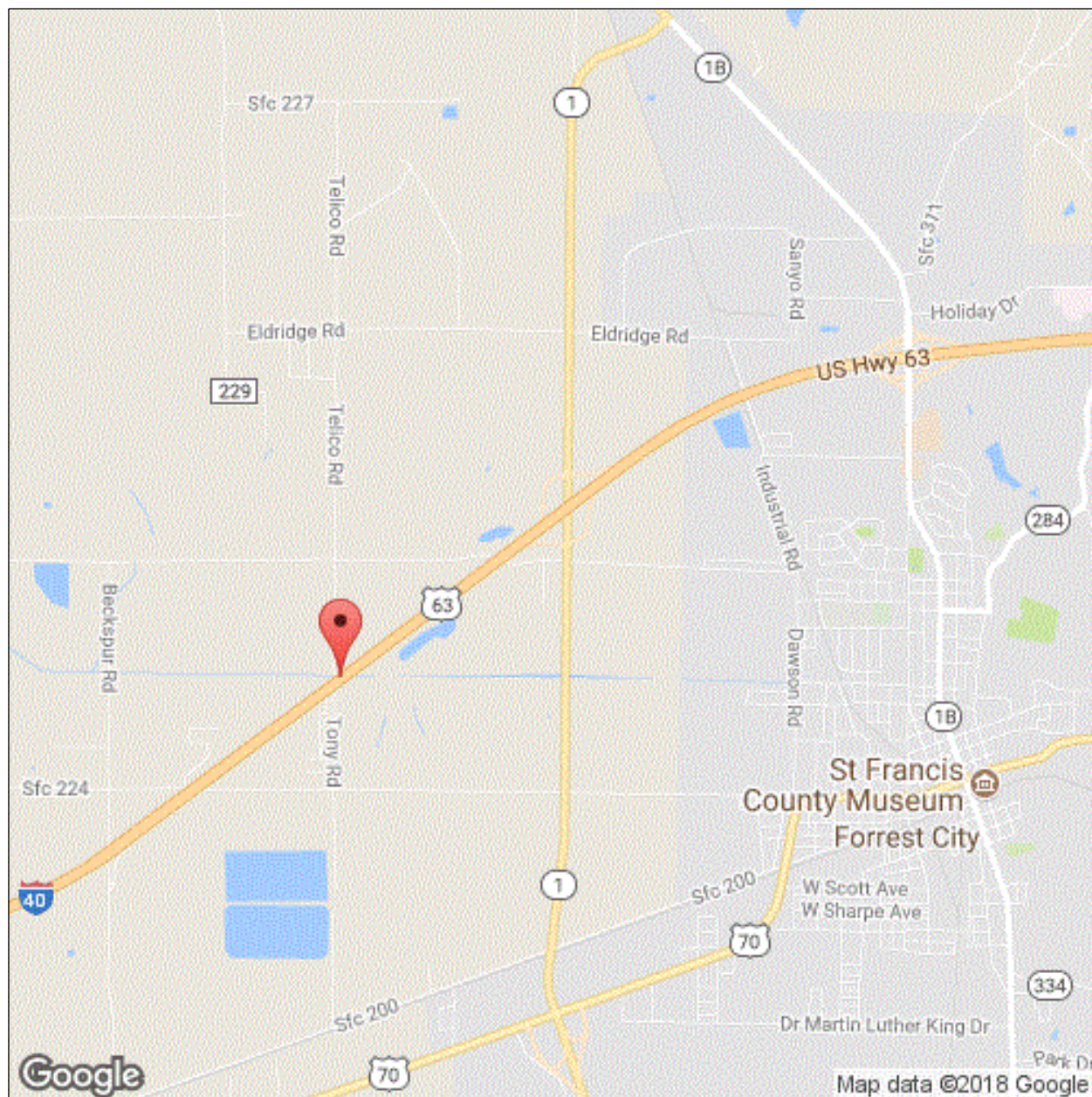
Structure Number: A3614

Inspection Date:

Facility Carried: I-40WB/Se51/L237.8

### Bridge Inspection Report

### Location Map



Latitude: 35.015850

Longitude: -90.834549

Inspector:

Structure Number: A3614

Inspection Date:

Facility Carried: I-40WB/Se51/L237.8

## Bridge Inspection Report

### Location Map



Latitude: 35.015850

Longitude: -90.834549

**Inspector:**

**Inspection Date:**

**Structure Number:** A3614

**Facility Carried:** I-40WB/Se51/L237.8

**Bridge Inspection Report**

**Executive Summary**

Inspector:

Structure Number: A3614

Inspection Date:

Facility Carried: I-40WB/Se51/L237.8

## Bridge Inspection Report

## National Bridge Inventory

IDENTIFICATION		INSPECTIONS	
(1) STATE CODE	056 - Arkansas	(90) INSPECTION DATE	01/25/2018
(8) STRUCTURE NUMBER	A3614	(91) DESIGNATED INSPECTION FREQUENCY	24
(5) INV. ROUTE (ON/UNDER)	1 1 1 40 4	(92) CRITICAL FEATURE INSPECTION	(93) CFI DATE
(2) HIGHWAY AGENCY	01 (3) COUNTY CODE 123	A. FRACTURE CRITICAL DETAIL	N
(4) PLACE CODE	00000	B. UNDERWATER INSPECTION	N
(6) FEATURES INTERSECTED	Spring Creek	C. OTHER SPECIAL	N
(7) FACILITY CARRIED	I-40WB/Se51/L237.8		
(9) LOCATION	4.58 Mi E Of Jct Sh 261		
(11) MILEPOINT 237.800	(12) BASE HIGHWAY NETWORK 1		
(13A) LRS INVENTORY ROUTE	0000040510 (13B) SUBROUTE NUMBER -1		
(16) LATITUDE	35.015850 (17) LONGITUDE -90.834549		
(98A) BORDER BRIDGE CODE			
PERCENT RESPONSIBILITY	(99) BORDER BRIDGE STRUCT		
STRUCTURE TYPE AND MATERIAL		CONDITION	
(43) STRUCTURE TYPE, MAIN		(58) DECK	5
A) KIND OF MATERIAL/DESIGN: 1 - Concrete		(59) SUPERSTRUCTURE	5 (60) SUBSTRUCTURE 5
B) TYPE OF DESIGN/CONSTR: 01 - Slab		(61) CHANNEL & CHANNEL PROTECTION	8 (62) CULVERT N
(44) STRUCTURE TYPE, APPROACH SPANS			
A) KIND OF MATERIAL/DESIGN: 0 - Other			
B) TYPE OF DESIGN/CONSTR: 00 - Other			
(45) NUMBER OF SPANS IN MAIN	3 (46) NUMBER OF APPROACH	0	
(107) DECK STRUCTURE TYPE	1 (108A) WEARING SURFACE	3	
(108B) DECK MEMBRANE	0 (108C) DECK PROTECTION	0	
AGE OF SERVICE		LOAD RATING AND POSTING	
(27) YEAR BUILT	1965 (106) YEAR RECONSTRUCTED	2015	
(42) TYPE OF SERVICE	ON 1 UNDER 5	(31) DESIGN LOAD 6	
(28) LANES	ON 02 UNDER 00	(63) METHOD USED TO DETERMINE OPERATING RATING	
(29) AVERAGE DAILY TRAFFIC	57311 (19) BYPASS DETOUR LENGTH	3	
(30) YEAR OF AVERAGE DAILY TRAFFIC	2014	(64) OPERATING RATING 60.0	
(109) AVERAGE DAILY TRUCK TRAFFIC	51	(65) METHOD USED TO DETERMINE INVENTORY RATING	
		1	
		(66) INVENTORY RATING 36.0	
		(70) BRIDGE POSTING 5	
		(41) STRUCTURE OPEN/POSTED/CLOSED A	
GEOMETRIC DATA		APPRAISAL	
(48) LENGTH OF MAX SPAN (ft.)	30 (49) STRUCTURE LENGTH (ft.)	90	
(50) CURB/SIDEWALK WIDTHS (ft.)	LEFT 0 RIGHT 0	(67) STRUCTURAL EVALUATION 5	
(51) BRDG RDWY WIDTH CURB-TO-CURB (ft.)	39.7	(68) DECK GEOMETRY 6	
(52) DECK WIDTH, OUT-TO-OUT (ft.)	42.3	(69) UNDERCLEARANCES, VERTICAL & HORIZONTAL N	
(32) APPROACH ROADWAY WIDTH (ft.)	38.1	(71) WATERWAY ADEQUACY 8	
(33) BRIDGE MEDIAN 0	(34) SKEW (DEG.) 45	(72) APPROACH ROADWAY ALIGNMENT 8	
(35) STRUCTURE FLARED 0	(10) INV RTE, MIN VERT CLEAR (ft.)	99.99	
(47) TOTAL HORIZONTAL CLEARANCE (ft.)	40.7	(36) TRAFFIC SAFETY FEATURE	
(53) VERTICAL CLEARANCE OVER BRIDGE ROADWAY (ft.)	99.99	36A) BRIDGE RAILINGS: 1	
(54) VERTICAL UNDER CLEARANCE (ft.)	N 0	36B) TRANSITIONS: 1	
(55) LATERAL UNDER CLEARANCE RIGHT (ft.)	N 99.9	36C) APPROACH GUARDRAIL: 1	
(56) MIN LATERAL UNDER CLEARANCE (ft.)	0	36D) APPROACH GUARDRAIL ENDS: 1	
		(113) SCOUR CRITICAL BRIDGES 5	
		SUFFICIENCY RATING 73.0 STATUS 0	
PROPOSED IMPROVEMENTS		CLASSIFICATION	
(75A) TYPE OF WORK PROPOSED	(75B) WORK DONE BY	(112) NBIS BRIDGE LENGTH Y	
(76) LENGTH OF STRUCTURE IMPROVEMENT (ft.)	0	(104) HIGHWAY SYSTEM OF THE INVENTORY ROUTE 1	
(94) BRIDGE IMPROVEMENT COST (\$)	0	(26) FUNCTIONAL CLASSIFICATION OF INVENTORY ROUTE 01	
(95) ROADWAY IMPROVEMENT COST (\$)	0	(100) STRAHNET HIGHWAY DESIGNATION 1	
(96) TOTAL PROJECT COST	0	(101) PARALLEL STRUCTURE DESIGNATION L	
(97) YEAR OF IMPROVEMENT COST ESTIMATE		(102) DIRECTION OF TRAFFIC 1	
(114) FUTURE ADT 19965	(115) YEAR OF FUTURE ADT 2028	(103) TEMP STRUCTURE	
		(105) FEDERAL LANDS HIGHWAYS 0	
		(110) DESIGNATED NATIONAL NETWORK 1	
		(20) TOLL 3	
		(21) MAINTENANCE RESPONSIBILITY 01	
		(22) OWNER 01	
		(37) HISTORICAL 5	
		NAVIGATION DATA	
		(38) NAVIGATION CONTROL 0	
		(111) PIER OR ABUTMENT PROTECTION 1	
		(39) NAV VERT CLEARANCE (ft.) 0	
		(116) MIN NAVIGATION VERT CLEARANCE, VERT LIFT BRIDGE (ft.) 0	
		(40) NAV HORIZONTAL CLEARANCE (ft.) 0	

Inspector:

Structure Number: A3614

Inspection Date:

Facility Carried: I-40WB/Se51/L237.8

## Bridge Inspection Report

## Element Inspection

	Environment	Total Quantity	Units	Condition State 1	Condition State 2	Condition State 3	Condition State 4
<b>38 - Reinforced Concrete Slab</b>	1- Ben.	3780	sq. ft.	3229	450	101	0
Soffit has open longitudinal cracks with areas of heavy efflorescence and small rust stains all spans. Span #1 soffit has four two foot spalls at sona--void drains with exposed rebar with 5% section loss. Span #2 soffit has a three foot spall near bent #3 pile #6 with exposed rebar with 5% section loss.							
1090 - Exposed Rebar		11		0	0	11	0
1120 - Efflorescence/Rust Staining		90		0	0	90	0
1130 - Cracking (RC and Other)		450		0	450	0	0
<b>227 - Reinforced Concrete Pile</b>	1- Ben.	16	each	16	0	0	0
<b>234 - Reinforced Concrete Pier Cap</b>	1- Ben.	304	ft.	290	3	11	0
Bent #2 cap left and right ends have multiple cracks with spalling on top with no rebar exposed. Bent #2 cap ahead face has a two foot spall between piles #2,3 with no rebar exposed. Bent #3 cap back face has a three foot delamination between piles #2,3. Bent #3 cap back face has a two foot spall at keyway between piles #6,7 with no rebar exposed. Bent #3 cap bottom chord between piles #4, 5 back face has a two foot spall with exposed rebar with 5% section loss. Bent #4 cap 15' from right end at top has a 3' X2' six inch deep spall with no rebar exposed. All caps have vertical hairline cracks various spacing.							
1080 - Delamination/Spall/Patched Area		12		0	3	9	0
1090 - Exposed Rebar		2		0	0	2	0
<b>301 - Pourable Joint Seal</b>	1- Ben.	256	ft.	216	0	40	0
Several feet each pourable joint has loss of adhesion.							
2320 - Seal Adhesion		40		0	0	40	0
<b>321 - Reinforced Concrete Approach Slab</b>	1- Ben.	2880	sq. ft.	2680	200	0	0
Abutment #1,2 approach slabs have open transvers cracks.							
1130 - Cracking (RC and Other)		200		0	200	0	0
<b>331 - Reinforced Concrete Bridge Railing</b>	1- Ben.	180	ft.	180	0	0	0

**Inspector:**

**Inspection Date:**

**Structure Number:** A3614

**Facility Carried:** I-40WB/Se51/L237.8

**Bridge Inspection Report**

**Pictures**

PHOTO 1

Description

PHOTO 1

Description

**Inspector:**

**Inspection Date:**

**Structure Number:** A3614

**Facility Carried:** I-40WB/Se51/L237.8

**Bridge Inspection Report**

**Pictures**

PHOTO 2

Description

PHOTO 2

Description

**Inspector:**

**Inspection Date:**

**Structure Number:** A3614

**Facility Carried:** I-40WB/Se51/L237.8

**Bridge Inspection Report**

**Sketches**

Inspector:

Structure Number: A3614

Inspection Date:

Facility Carried: I-40WB/Se51/L237.8

### Bridge Inspection Report

## Maintenance Needs

Date Reported: 1/19/2012 12:00:00 AM

Priority: D - Routine

Work Code: N/A

---

### Deficiency Description:

Bent #2 cap left and right ends have multiple cracks with spalling on top with no rebar exposed.

Bent #2 cap ahead face has a two foot spall between piles #2,3 with no rebar exposed.

Bent #3 cap back face has a three foot delamination between piles #2,3.

Bent #3 cap back face has a two foot spall at keyway between piles #6,7 with no rebar exposed.

Bent #3 cap bottom chord between piles #4, 5 back face has a two foot spall with exposed rebar with 5% section loss.

Bent #4 cap 15' from right end at top has a 3' X2' six inch deep spall with no rebar exposed.

### Work Description:

---

Date Repairs Completed:

Maintenance Comments:

---

Stage: Monitor



PHOTO 1 Description

Stage: Monitor



PHOTO 2 Description

Inspector:

Inspection Date:

Structure Number: A3614

Facility Carried: I-40WB/Se51/L237.8

## Bridge Inspection Report

### Maintenance Needs

Stage: Monitor



PHOTO 3      Description      Bent #3 cap back face and bottom  
between piles #4,5.

Inspector:

Structure Number: A3614

Inspection Date:

Facility Carried: I-40WB/Se51/L237.8

### Bridge Inspection Report

## Maintenance Needs

Date Reported: 1/19/2012 12:00:00 AM

Priority: C - Important

Work Code: N/A

---

### Deficiency Description:

Soffit has open longitudinal cracks with areas of heavy efflorescence and small rust stains all spans.  
Span #1 soffit has four two foot spalls at sona--void drains with exposed rebar with 5% section loss.  
Span #2 soffit has a three foot spall near bent #3 pile #6 with exposed rebar with 5% section loss.

### Work Description:

---

Date Repairs Completed:

Maintenance Comments:

---

Stage: Monitor



PHOTO 1      Description      Span #2 soffit between piles # 5,6.

Stage: Monitor



PHOTO 2      Description

Inspector:

Inspection Date:

Structure Number: A3614

Facility Carried: I-40WB/Se51/L237.8

## Bridge Inspection Report

### Maintenance Needs

Stage: Monitor



PHOTO 3 Description

Stage: Monitor



PHOTO 4 Description Typical soffit cracks with efflorescence and staining.

Inspector:

Structure Number: A3614

Inspection Date:

Facility Carried: I-40WB/Se51/L237.8

## Bridge Inspection Report

### Maintenance Needs

Date Reported: 01/25/2018

Priority: C - Important

Work Code: N/A

---

#### Deficiency Description:

Small trees and vegetation are growing besides bridge.

#### Work Description:

---

#### Date Repairs Completed:

#### Maintenance Comments:

---

#### Stage: Monitor



PHOTO 1    Description    Typical brush

Inspector:

Structure Number: A3614

Inspection Date:

Facility Carried: I-40WB/Se51/L237.8

### Bridge Inspection Report

## Maintenance Needs

Date Reported: 01/25/2018

Priority: C - Important

Work Code: N/A

---

### Deficiency Description:

Several feet each pourable joint has loss of adhesion.

### Work Description:

---

### Date Repairs Completed:

### Maintenance Comments:

---

Stage: Open

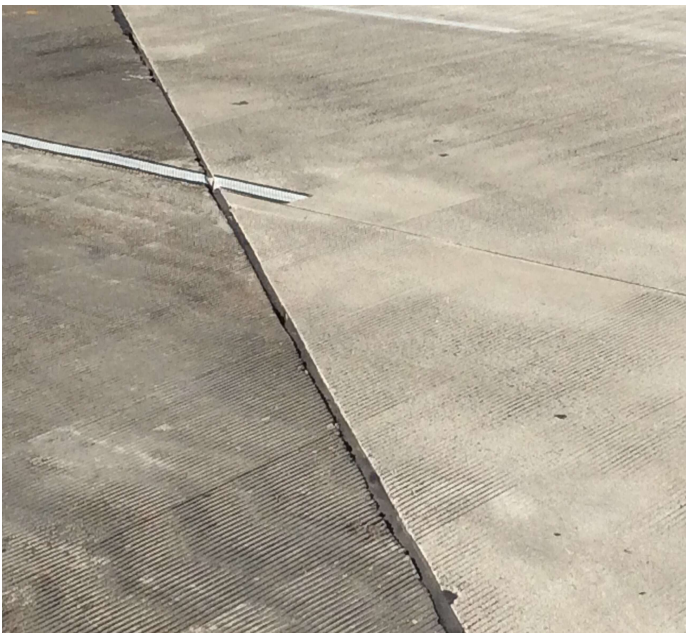


PHOTO 1    Description    Typical loss of adhesion.